

DRAWING LIST

<b>Design</b>	<b>Dwg</b>	<b>Description</b>	<b>Customer</b>	<b>Date</b>	<b>REV</b>
Chester 20' x 8' Flat Bottomed Work Boat					
300	-01	Plan & Profile		11/27/07	
	-02	Body Plan-Frames		11/27/07	
	-PL-1	Bottom Layout		11/27/07	
	-PL-2	Side & Side Deck Layout		11/27/07	
	-PL-3	Main Deck Layout		11/27/07	
	-2-1	Transom		11/27/07	
	-2-2	Bow		11/27/07	
	-2-3	Push Knees		7/2/14	
	-B-1	Flange Bending		11/27/07	12/10/07
	-F-R	Frame Dimensions		11/27/07	
	-F-1	Typical Frames		11/27/07	

NC Parts Ver w knees 140702

Response Marine, Inc. Plaz Parts for #300A, Chester 20' FBWB20  
 Note Parts are listed and nested for 1 Boat  
 Push knees added 140702  
 File: Chester 300 20FBWB SD

Cut Files are: 300A- 3parts 140702 & 300-4parts 140702

7/2/2014  
 Print Date: 7/2/2014

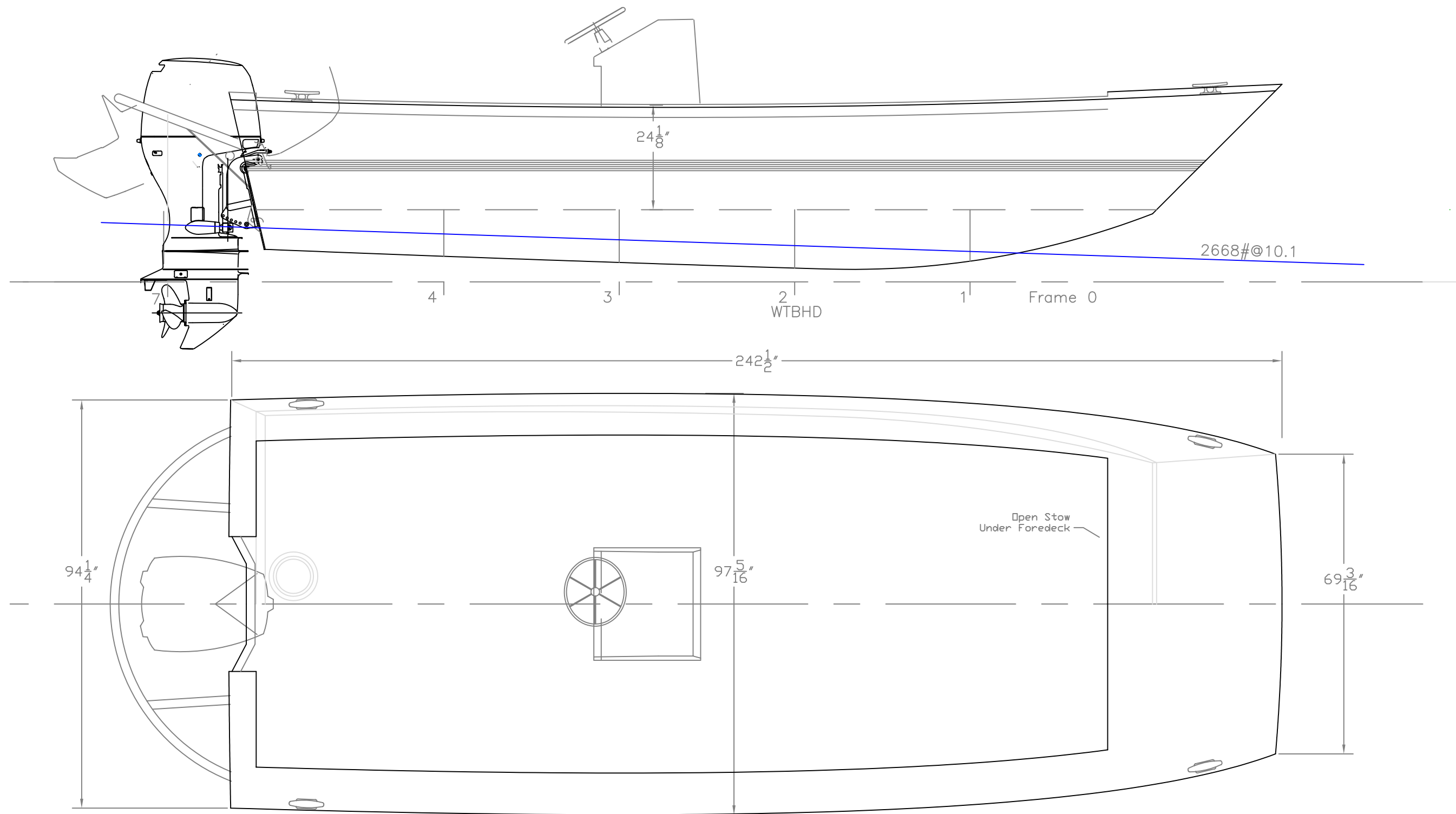
**3/16" Parts- 5086/5083 H116**

<u>Part #</u>	<u>Pieces</u>	<u>Description</u>	<u>BEND</u>
B	1	Bottom	
F0-U	2	Frame 0, Topsides only	Y
F1	1	Frame 1	Y
F1-U	2	Frame 1 Upper	Y
F2	1	Frame 2	Y
F2-U	2	Frame 2 Upper	Y
F3	1	Frame 3	Y
F3-U	2	Frame 3 Upper	Y
F4	1	Frame 4	Y
F4-U	2	Frame 4, Upper	Y
FD	1	Foredeck	
FDC	1	Foredeck Coaming	
G0-A	1	Girder, CL, fwd, F1-Stem	Y
G0-B	1	Girder, CL, mid, F4-F1	Y
G0-C	1	Girder, CL, aft, Transom-F4	Y
GP-A	1	Girder, Port fwd, F2-Bow	Y
GP-B	1	Girder, Port aft, Transom-F2	Y
GS-A	1	Girder, Stbd fwd, F2-Bow	Y
GS-B	1	Girder, Stbd aft, Transom-F2	Y
GS-P	1	Girder at Stem, Port	Y
GS-S	1	Girder at Stem, Stbd	Y
PK-1P	1	Push Knee, Deck Doubler, Port	
PK-1S	1	Push Knee, Deck Doubler, Stbd	
PK-2P	1	Push Knee, Bow Doubler, Port	
PK-2S	1	Push Knee, Bow Doubler, Stbd	
SDC-P	1	Coaming, Port	
SDC-S	1	Coaming, Stbd	
SD-P	1	Side Deck, Stbd	
SD-S	1	Side Deck Port	
SP-A	1	Sole Fwd, Port	
SP-B	1	Sole Aft, Port	
SS-A	1	Sole Fwd, Stbd	
SS-B	1	Sole Aft, Stbd	
ST	1	Stem/Bow	
TD	2	Transom Deck	
TDC	2	Transom Deck Coaming	
TDC-C	2	Transom Deck Cut Coaming	

TS-P	1	Topsides, Port
TS-S	1	Topsides, Starboard
	47	Sub Total

**1/4" Parts- 5086/5083 H116**

<u>Part #</u>	<u>Pieces</u>	<u>Description</u>	<u>Stock</u>
FB	2	Flat Bar for Transom	
PK-3	2	Push Knee Flange	
PK-4P	1	Push Knee Flange	
PK-4S	1	Push Knee Flange	
PK-5	2	Push Knee Flange	
PK-6	2	Push Knee Flange	
PK-7	2	Push Knee Flange	
TR	1	Transom	
	13	Sub Total	
	60	Total Cut Parts	



Note: Dimensions are to Inside of Skin

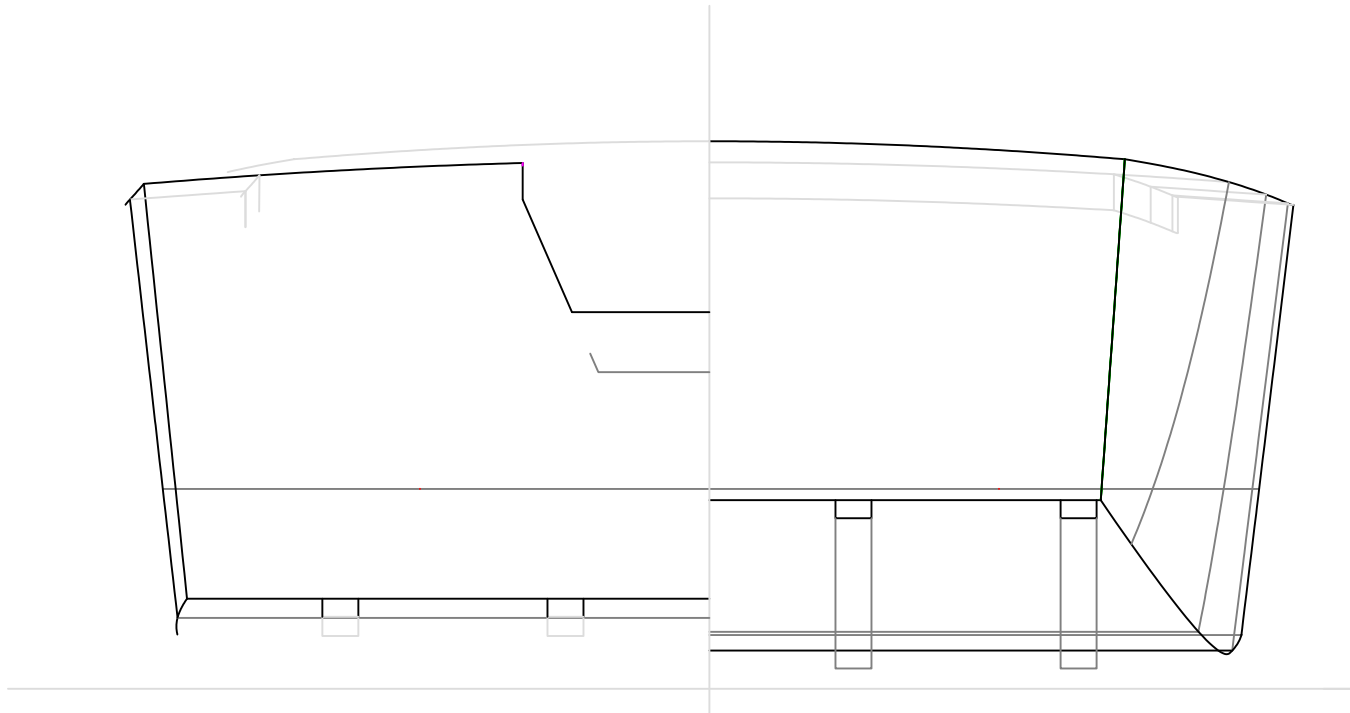
PLAN & PROFILE  
20'x8' WORKBOAT

For: Chester Marina

SCALE 1/2" = 1'	DES/DWN WAL	DATE 11/27/07
--------------------	----------------	------------------

<b>Response Marine, Inc.</b>		SHEET
Newburyport, MA, <a href="http://www.responsemarine.com">www.responsemarine.com</a>	DWG NO.	300-01

REV.	DESCRIPTION



BODY PLAN—Frames  
20'x8'WORKBOAT

For: Chester Marina

SCALE 3/4" = 1'	DES/DWN WAL	DATE 11/27/07
<b>Response Marine, Inc.</b>		SHEET
Newburyport, MA, <a href="http://www.responsemarine.com">www.responsemarine.com</a>		DWG NO. 300-02

REV.	DESCRIPTION

Note:  
Girders shown Before Bending

CL Girder  
-Flange to Stbd

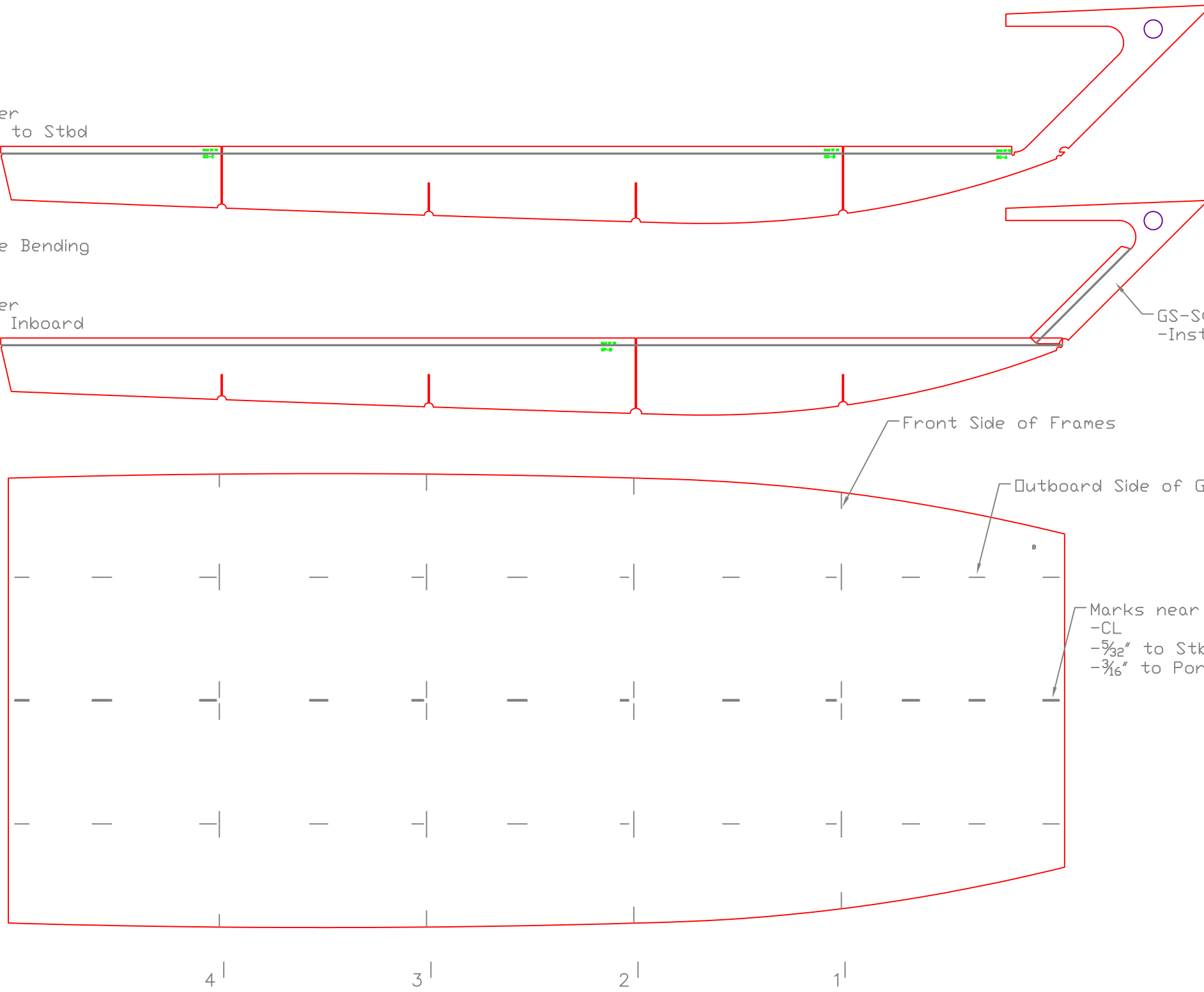
□B Girder  
-Flange Inboard

GS-S(P)  
-Install after Deck

Front Side of Frames

Outboard Side of Girder

Marks near CL  
-CL  
- $\frac{5}{32}$ " to Stbd  
- $\frac{3}{16}$ " to Port



BOTTOM LAYOUT

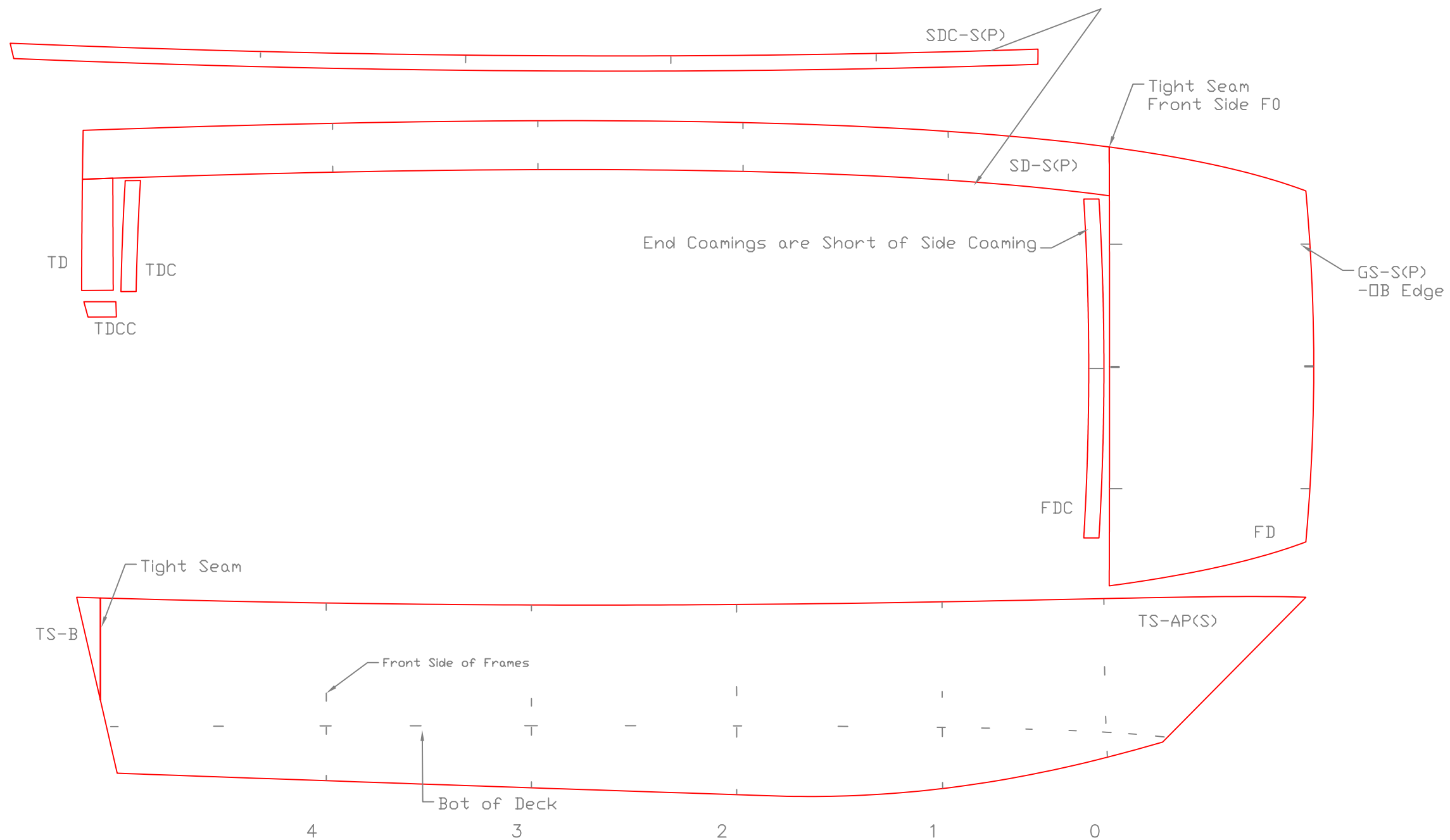
20'x8' WORKBOAT

For: Chester Marina

SCALE 1/2" = 1'	DES/DWN WAL	DATE 11/27/07
--------------------	----------------	------------------

<b>Response Marine, Inc.</b>		SHEET
Newburyport, MA, www.responsemarine.com		DWG NO. 300-PL-1

REV.	DESCRIPTION



SIDE & SIDE DECK LAYOUT

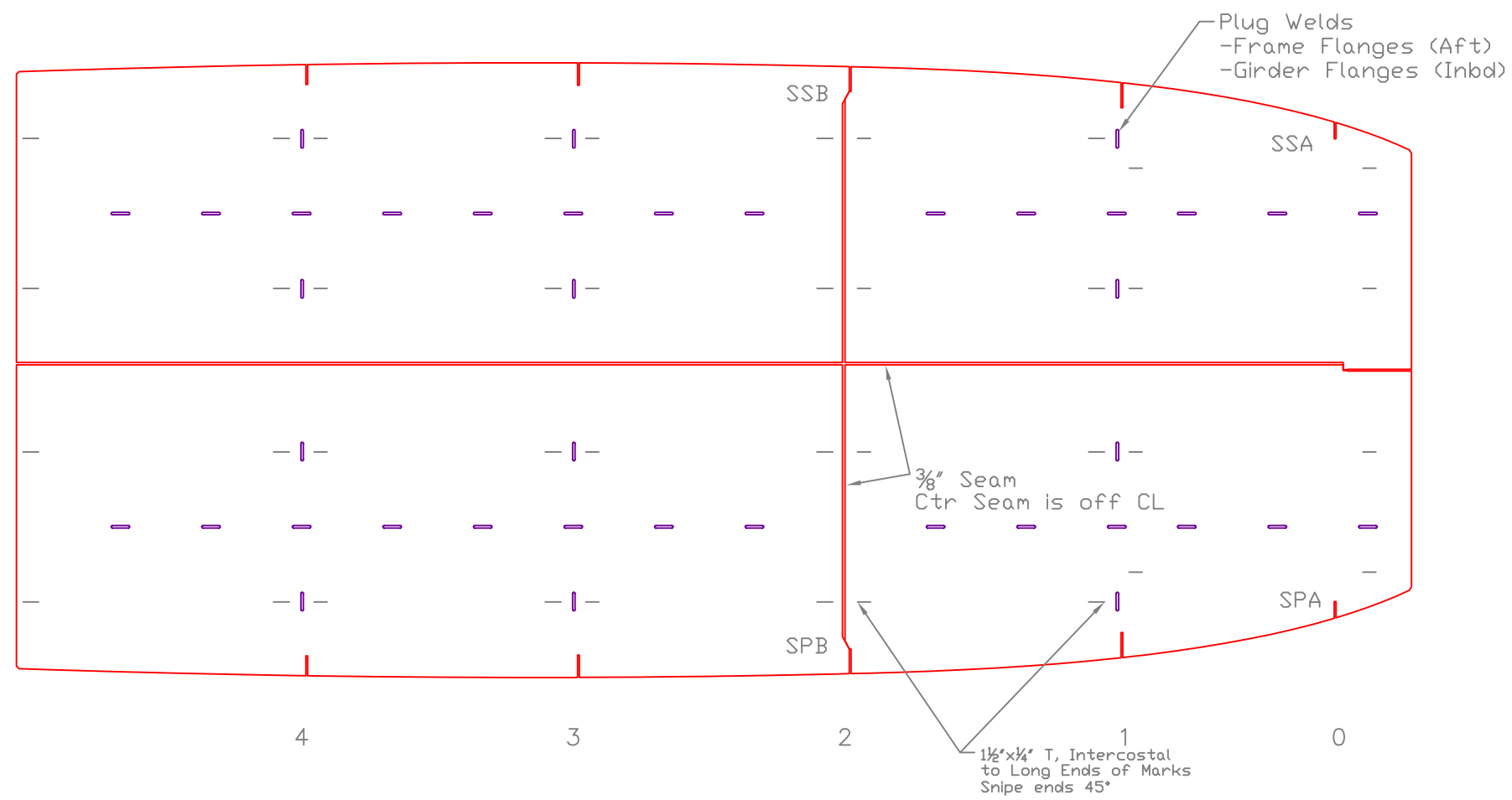
20'x8' WORKBOAT

For: Chester Marina

SCALE 1/2" = 1'	DES/DWN WAL	DATE 11/27/07
--------------------	----------------	------------------

<b>Response Marine, Inc.</b>		SHEET
Newburyport, MA, <a href="http://www.responsemarine.com">www.responsemarine.com</a>		DWG NO. 300-PL-2

REV.	DESCRIPTION



View is Underside, L'kg Up

MAIN DECK LAYOUT  
 20'x8' WORKBOAT

For: Chester Marina

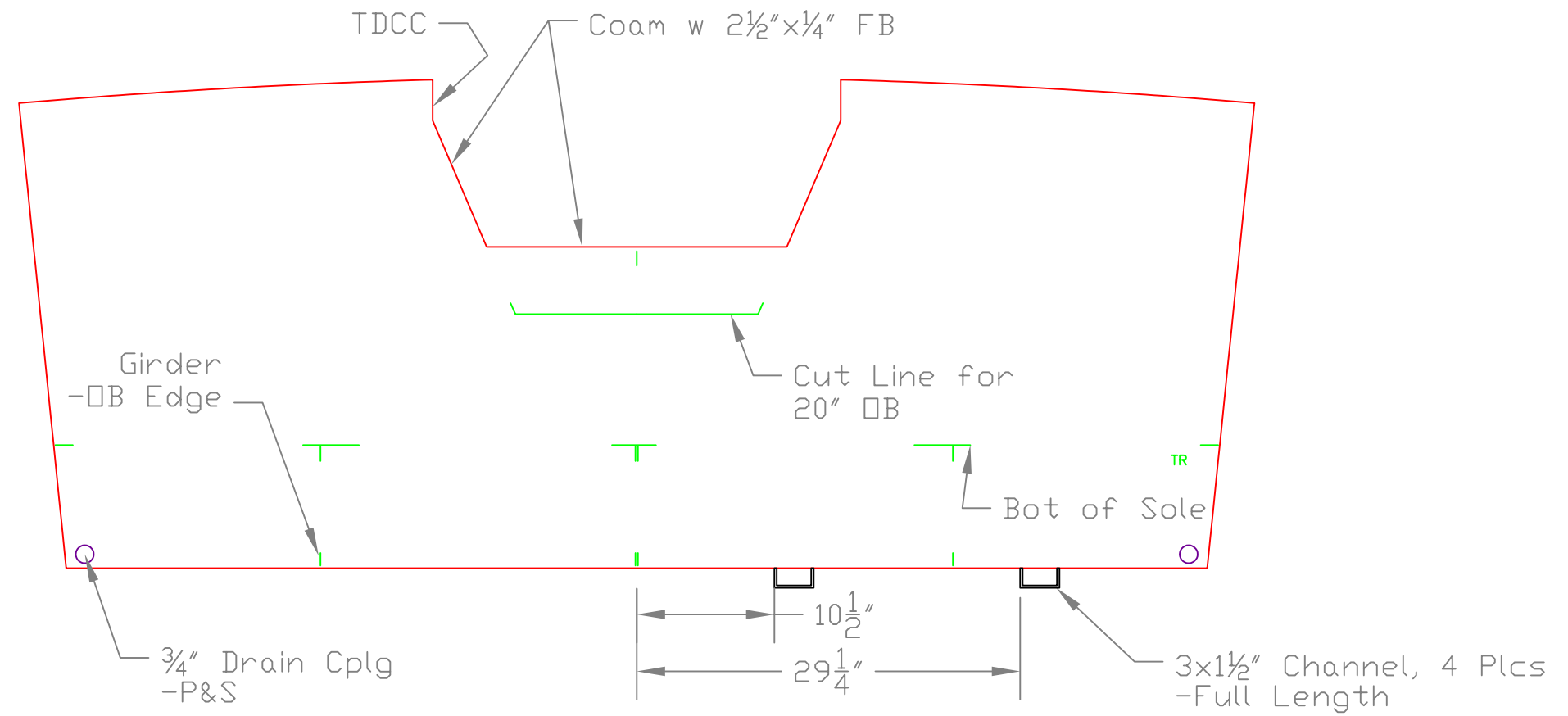
SCALE 1/2" = 1'	DES/DWN WAL	DATE 11/27/07
--------------------	----------------	------------------

**Response Marine, Inc.**  
 Newburyport, MA, www.responsemarine.com

SHEET  
 DWG NO. 300-PL-3

REV.	DESCRIPTION





TRANSOM

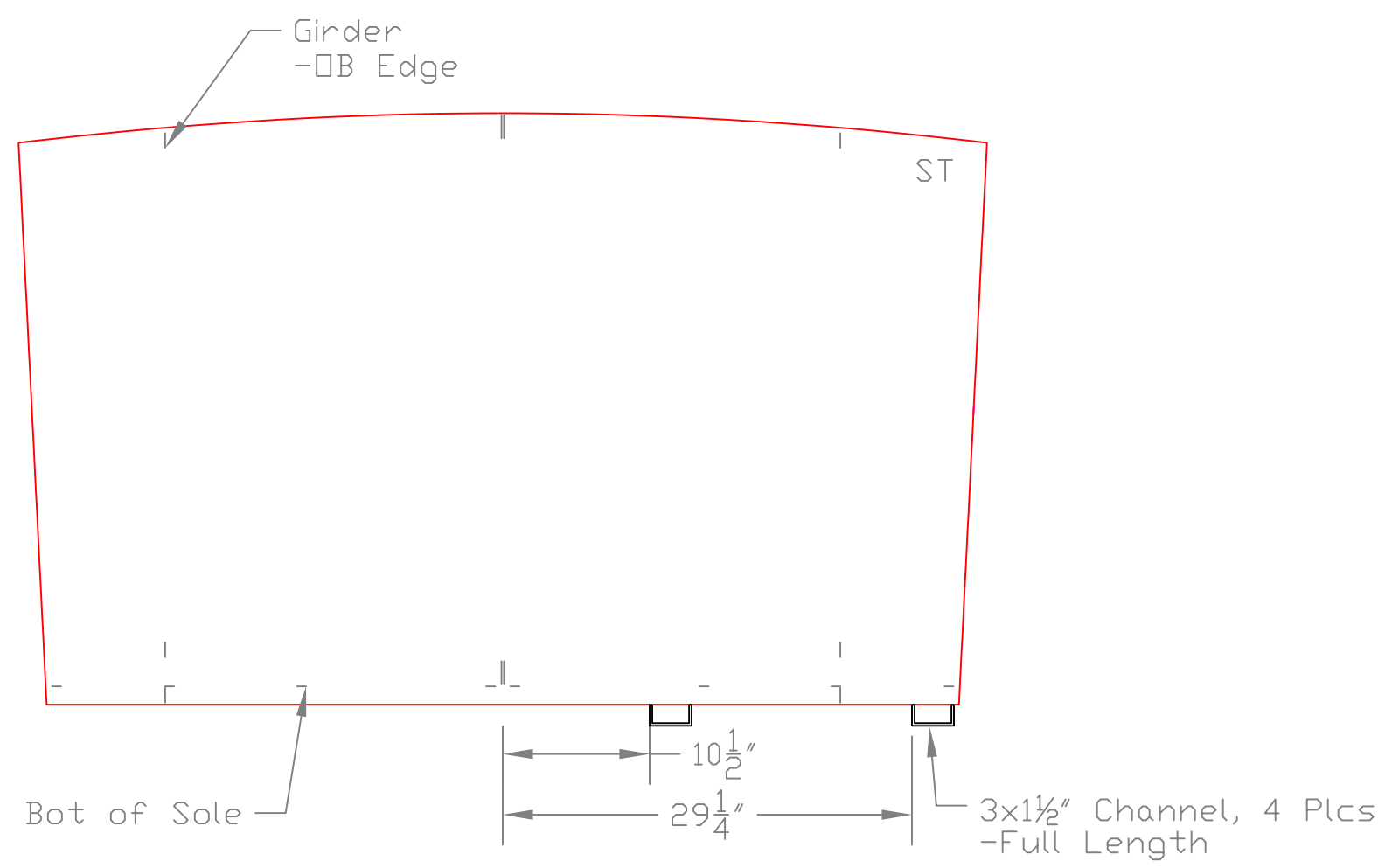
20'x8' WORKBOAT

For: Chester Marina

SCALE 1" = 1'	DES/DWN WAL	DATE 11/27/07
------------------	----------------	------------------

<b>Response Marine, Inc.</b>		SHEET
Newburyport, MA, <a href="http://www.responsemarine.com">www.responsemarine.com</a>		DWG NO. 300-2-1

REV.	DESCRIPTION



BOW

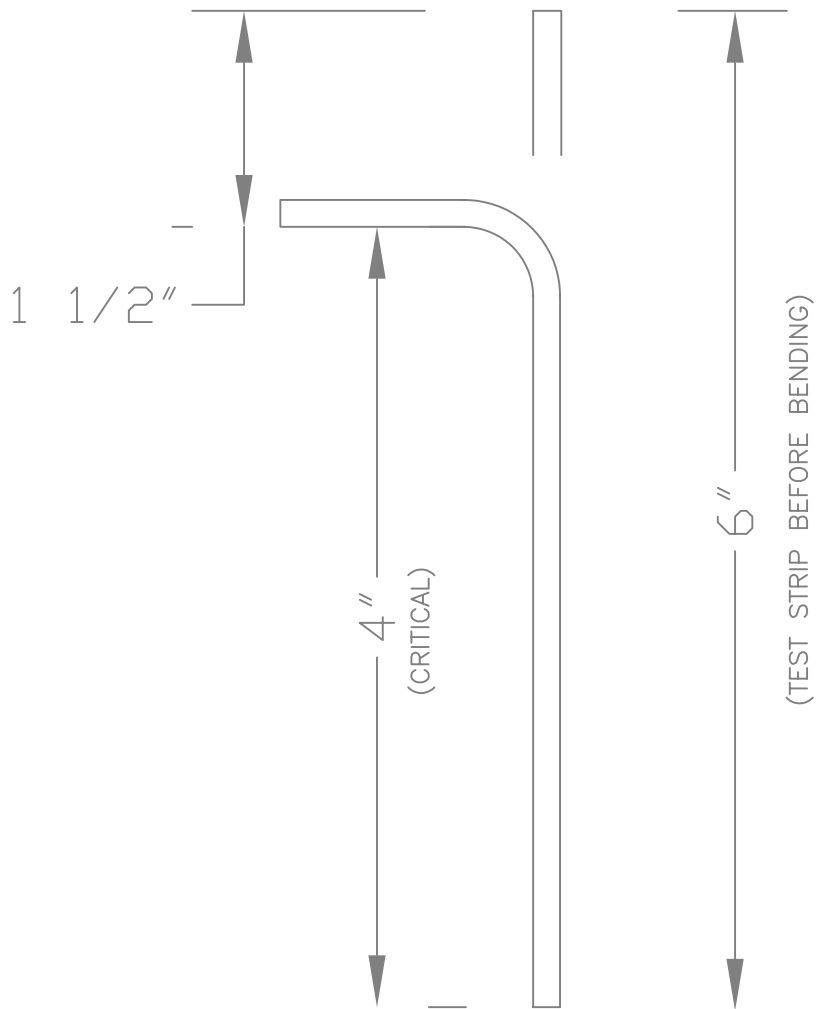
20'x8' WORKBOAT

For: Chester Marina

SCALE 1" = 1'	DES/DWN WAL	DATE 11/27/07
------------------	----------------	------------------

<b>Response Marine, Inc.</b> Newburyport, MA, <a href="http://www.responsemarine.com">www.responsemarine.com</a>	SHEET DWG NO. 300-2-2
---	--------------------------

REV.	DESCRIPTION



FRAME BENDING:  $\frac{3}{16}$ " 5086 H116 Stock

- 1) Confirm results for dimensions and cracking with test strips before bending frames.
- 2) Expected Die Radius is  $\frac{1}{2}$ "
- 3) Flanges are designed for Inside web length of  $1\frac{1}{2}$ " less than flat stock length as shown.
- 4) Expected Back Gauge setting is 1.55", but confirm and adjust.
- 5) Parts to be flanged per this same set-up:

- F0-U (2)
- F1-U (2)
- F2-U (2)
- F3-U (2)
- F4-U (2)
- F1 (1)
- F2 (1)
- F3 (1)
- F4 (1)
- G0-A (1)
- G0-B (1)
- G0-C (1)
- GP-A (1)
- GP-B (1)
- GS-A (1)
- GS-B (1)
- GS-P (1)
- GS-S (1)

Double these qty's for a 2 boat order.

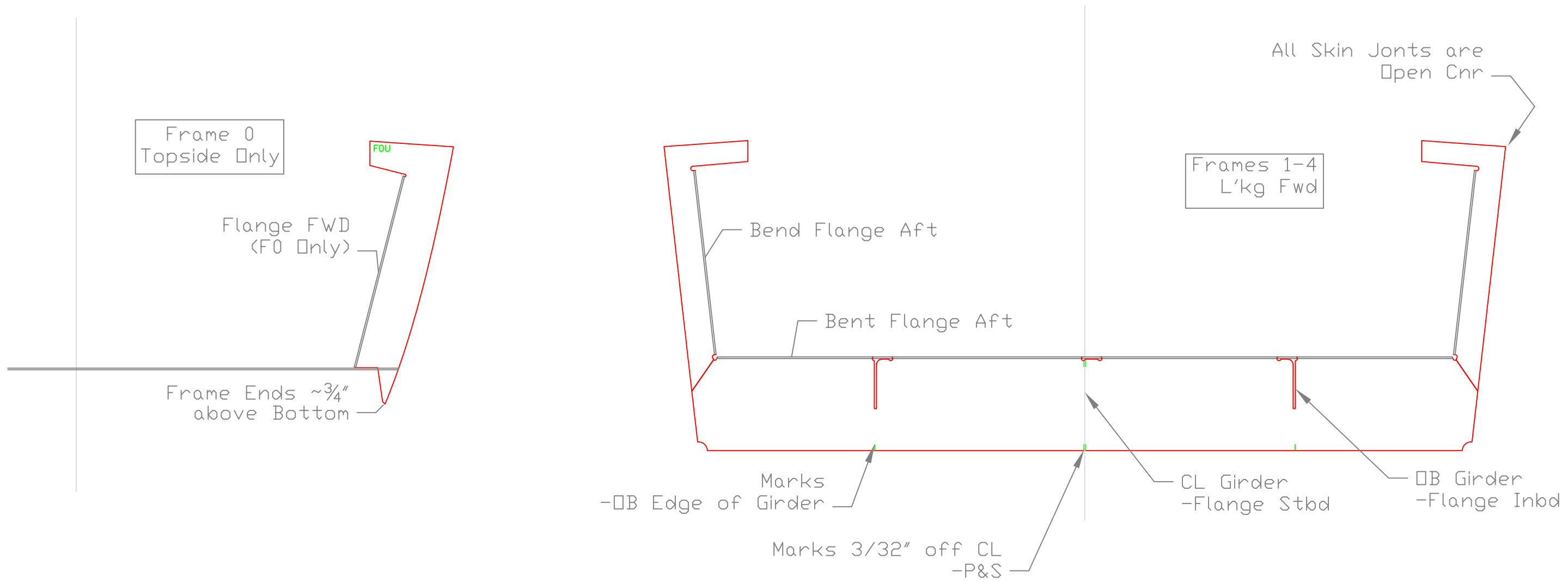
## FLANGE BENDING

20'x8'WORKBOAT

For: Chester Marina

SCALE 3/4" = 1'	DES/DWN WAL	DATE 11/27/07
<b>Response Marine, Inc.</b> <small>Newburyport, MA, www.responsemarine.com</small>		SHEET DWG NO. 300-B-1

REV.	DESCRIPTION



TYPICAL FRAMES

20'x8' WORKBOAT

For: Chester Marina

SCALE 1" = 1'	DES/DWN WAL	DATE 11/27/07
------------------	----------------	------------------

<b>Response Marine, Inc.</b>		SHEET
------------------------------	--	-------

Newburyport, MA, <a href="http://www.responsemarine.com">www.responsemarine.com</a>		DWG NO. 300-F-1
---	--	-----------------

REV.	DESCRIPTION