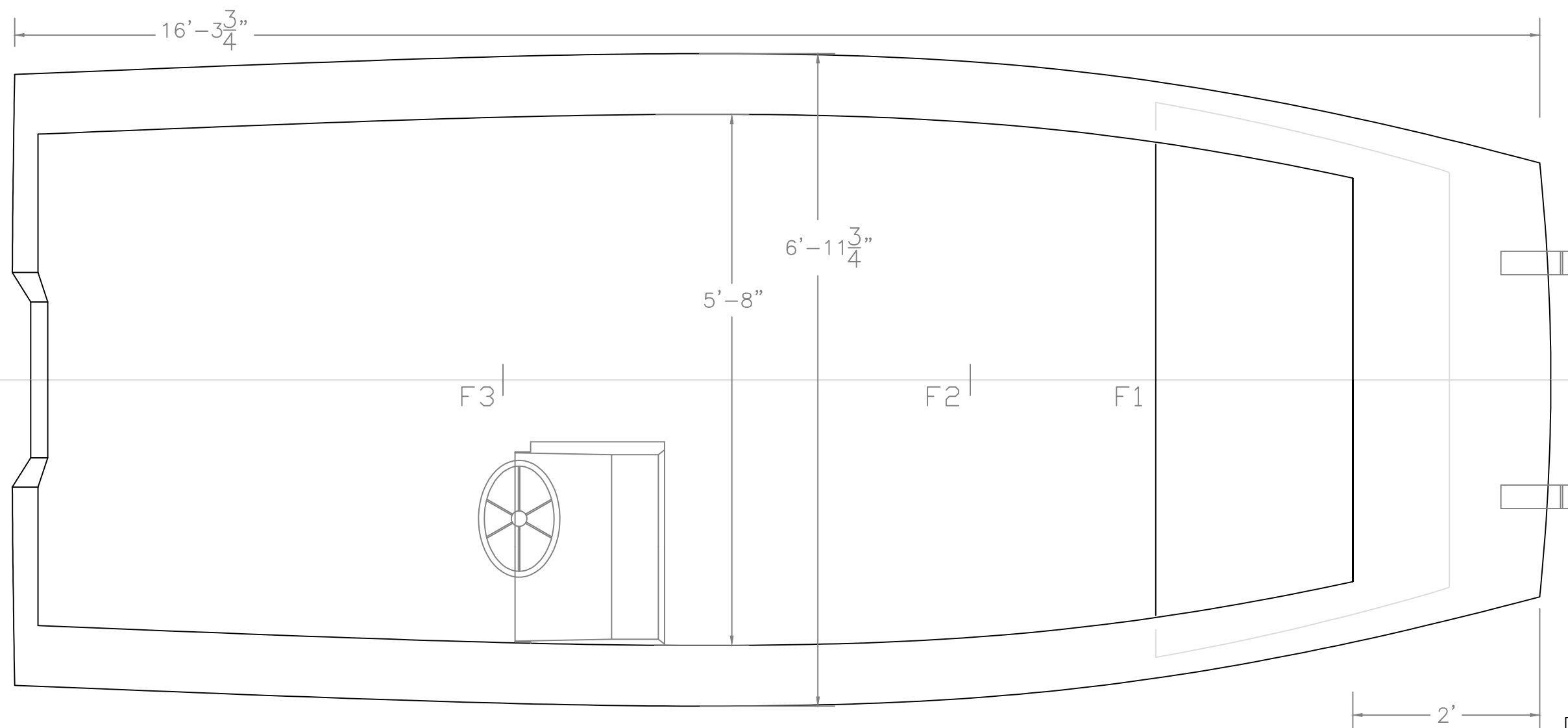
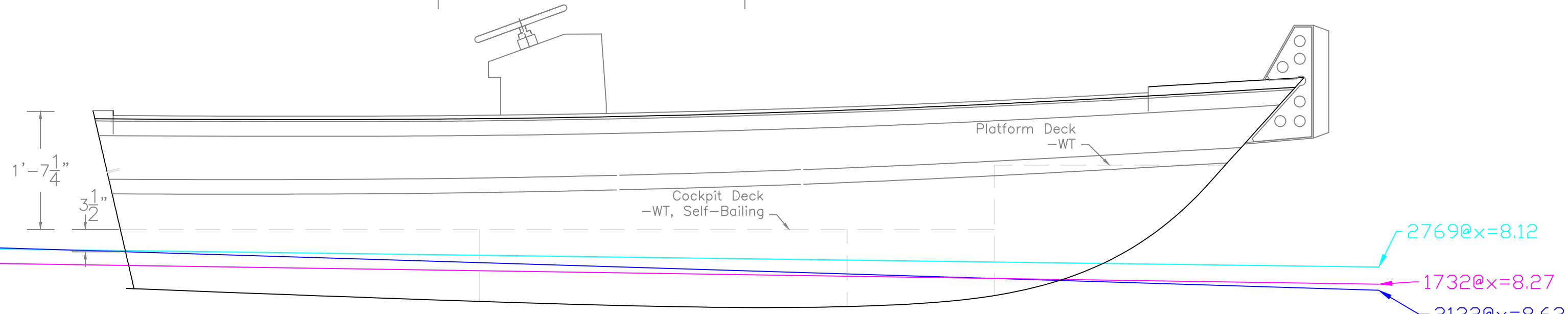


LCG 2 Pax (400#)

LCG 3 Pax (600#)

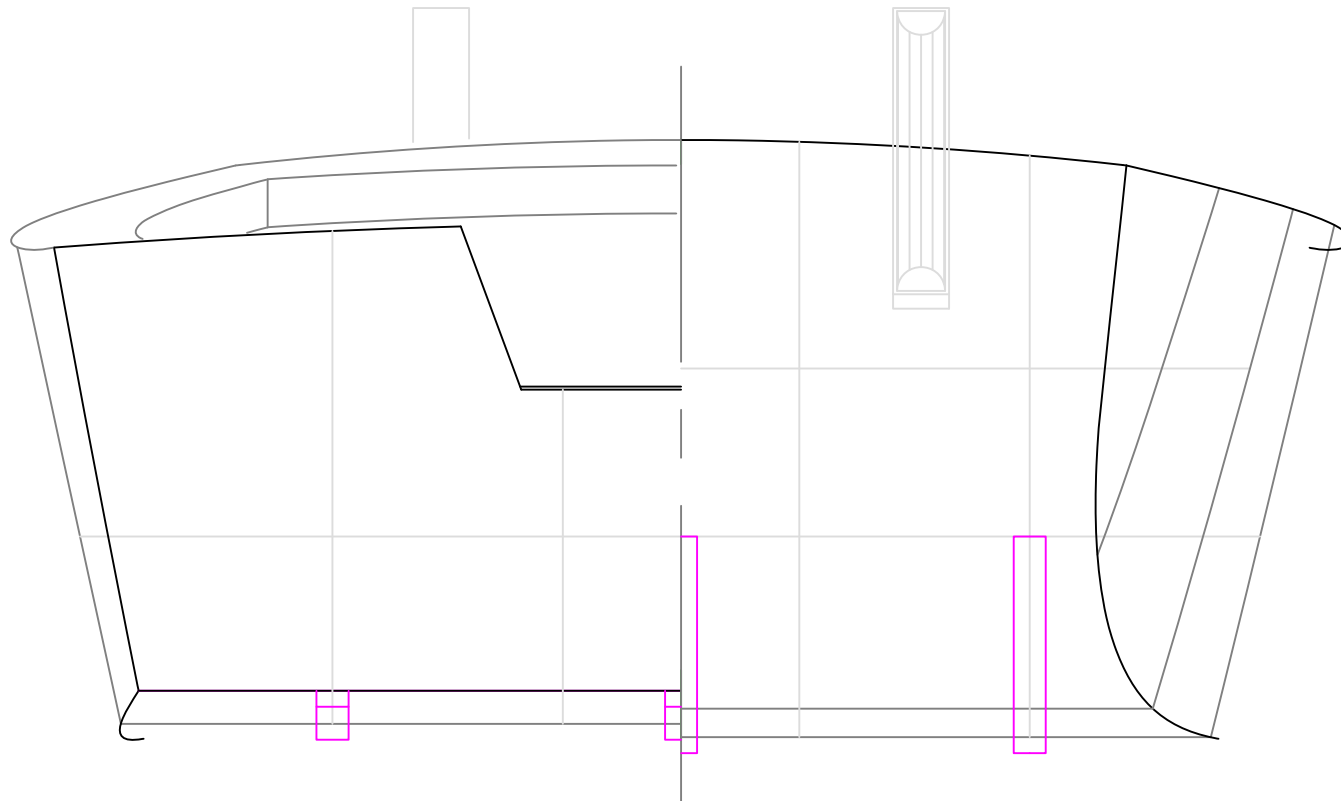


SELF-BAILING VERSION
 16' FLAT BOT WORK BOAT
 PLAN/PROFILE

SCALE 3/4" = 1'	DES/DWN WAL	DATE 12/1/14
--------------------	----------------	-----------------

Response Marine, Inc.		SHEET
Newburyport, MA, www.responsemarine.com		DWG NO. 495-P1

REV.	DESCRIPTION



BODY PLAN		
16' FBWB- Self Bailing Vers.		
SCALE 1" = 1'	DES/DWN WAL	DATE 12/1/14
Response Marine, Inc.		SHEET
Newburyport, MA, www.responsemarine.com		DWG NO. 495-02

REV.	DESCRIPTION

Response Marine, Inc. Plaz Parts for #495, Chester 16' FBWB- Self bailing
 File: Chester 16 FBWB\Derivatives\Self Bailing

12/1/2014
 Print Date: 12/2/2014

3/16" Parts- 5086/5083 H116

<u>Part #</u>	<u>Pieces</u>	<u>Description</u>	<u>BEND</u>
BOT	1	Bottom	
B1-AP	1	Bow Girder #1, Port, Install w/ Deck FL IN	Y, Flange B1
B1-AS	1	Bow Girder #1, Stbd, Install w/ Deck FL IN	Y, Flange B1
B1-CP	1	Transom Stiffener, at B1, Port, Stbd, Install w/ FL OUT	Y, Flange B1
B1-CS	1	Transom Stiffener, at B1, Stbd, Install w/ FL OUT	Y, Flange B1
B2-AP	1	Bow Girder #2, Port, Install w/ Deck FL IN	Y, Flange B1
B2-AS	1	Bow Girder #2, Stbd, Install w/ Deck FL IN	Y, Flange B1
B2-CP	1	Transom Stiffener, at B2, Port, Stbd, Install w/ FL OUT	Y, Flange B1
B2-CS	1	Transom Stiffener, at B2, Stbd, Stbd, Install w/ FL OUT	Y, Flange B1
B-P	2	Girder Aft, Port, Install w/ Deck Flange OUT	Y, Flange B1
B-S	2	Girder Aft, Stbd, Install w/ Deck Flange OUT	Y, Flange B1
F1	1	Frame 1, Install w/ Flange FWD	Y, Flange B1
F2	1	Frame 2, Install w/ Flange AFT	Y, Flange B1
F2-P	1	Frame 2 Upper, Port, Install w/ Flange AFT	Y, Flange B1
F2-S	1	Frame 2 Upper, Stbd, Install w/ Flange AFT	Y, Flange B1
F3	1	Frame 3, Install w/ Flange AFT	Y, Flange B1
F3-P	1	Frame 3 Upper, Port, Install w/ Flange AFT	Y, Flange B1
F3-S	1	Frame 3 Upper, Stbd, Install w/ Flange AFT	Y, Flange B1
FD	1	Foredeck	
FDC	1	Foredeck Coaming	
PK-1P	1	Push Knee, Deck Doubler, Port	
PK-1S	1	Push Knee, Deck Doubler, Stbd	
PK-2P	1	Push Knee, Bow Doubler, Port	
PK-2S	1	Push Knee, Bow Doubler, Stbd	
SDC-P	1	Coaming, Port	
SDC-S	1	Coaming, Stbd	
SD-P	1	Side Deck Port	
SD-S	1	Side Deck, Stbd	
S-P	1	Sole Port	
S-S	1	Sole Stbd	
STD	1	Step Deck	
TDC-P	1	Transom Deck Coaming, Port	
TDC-S	1	Transom Deck Coaming, Stbd	
TD-P	1	Transom Deck, Port	
TD-S	1	Transom Deck, Stbd	
TR	1	Transom	
TRS	1	Transom Stiffener, Horiz	Y, Flange B1
TS-P	1	Topsides, Port	
TS-S	1	Topsides, Starboard	
	41	Sub Total 3/16" 5086 Parts	

3/16" Parts- 5052

<u>Part #</u>	<u>Pieces</u>	<u>Description</u>	<u>BEND</u>
C1	2	Console Sides	

NC Parts 16-SB

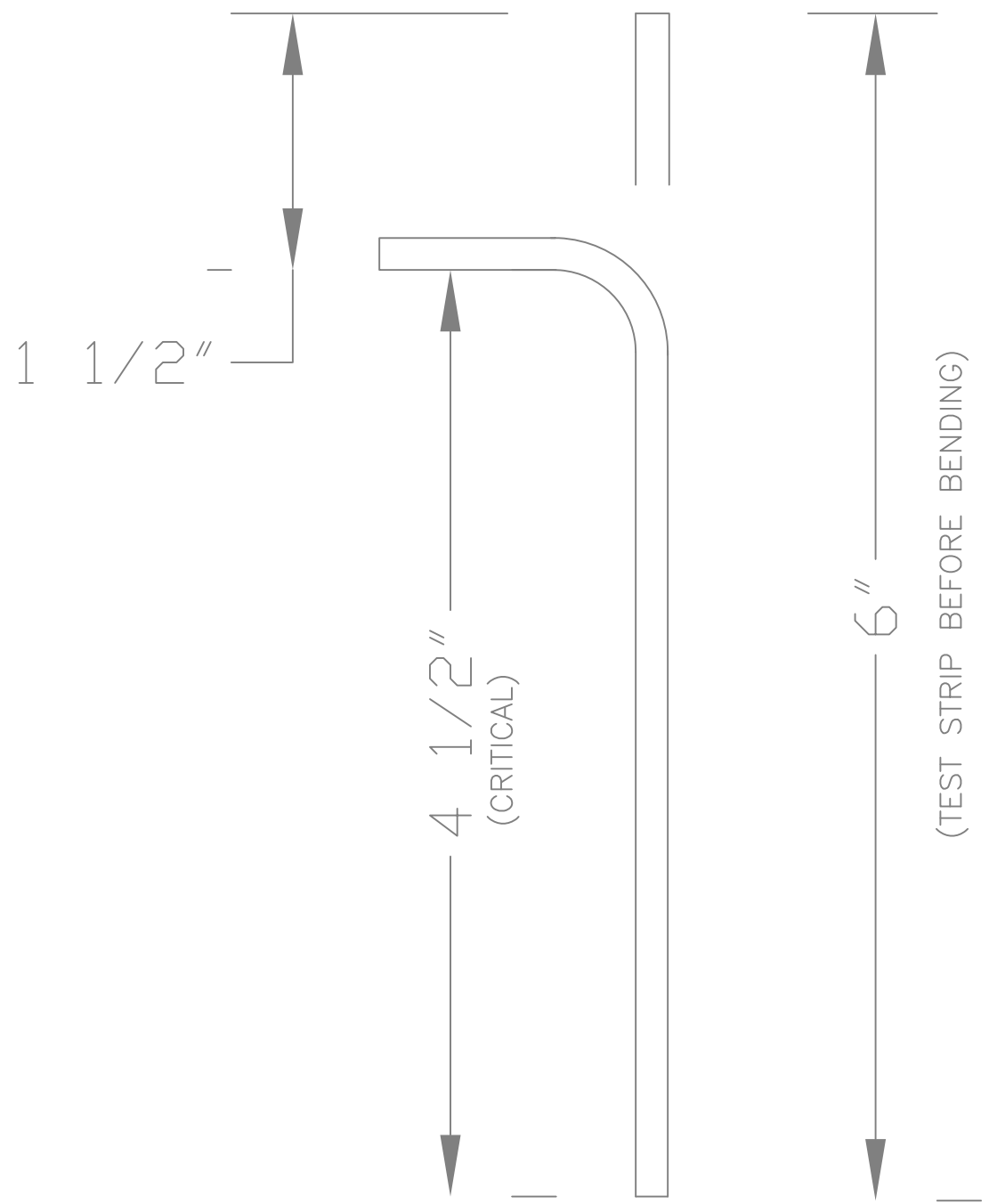
C2	1	Console Front	Y, Tight Radius (~1/8") on Marks
C3	1	Console Back	Y, Tight Radius (~1/8") on Marks
C4	1	Console Top	Y, Tight Radius (~1/8") on Marks
	5	Sub Total 3/16" 5052Parts	

1/4" Parts- 5086/5083 H116

<u>Part #</u>	<u>Pieces</u>	<u>Description</u>	<u>BEND</u>
PK-3	2	Push Knee, Body	
PK-4P	1	Push Knee, Flange Aft, Port	
PK-4S	1	Push Knee, Flange Aft, Stbd	
PK-5	2	Push Knee, Flange Top	
PK-6	2	Push Knee, Flange Fwd	
PK-7	2	Push Knee, Flange Bottom	
	10	Sub Total 1/4" 5086 Parts	
	56	Total Parts	

Yarde Nesting 141202: (Parts total quantities are correct)

3	3/16" 5086	96	240
1	3/16" 5086	48	144
1	3/16" 5052	36	120
1	1/4" 5086	25	40

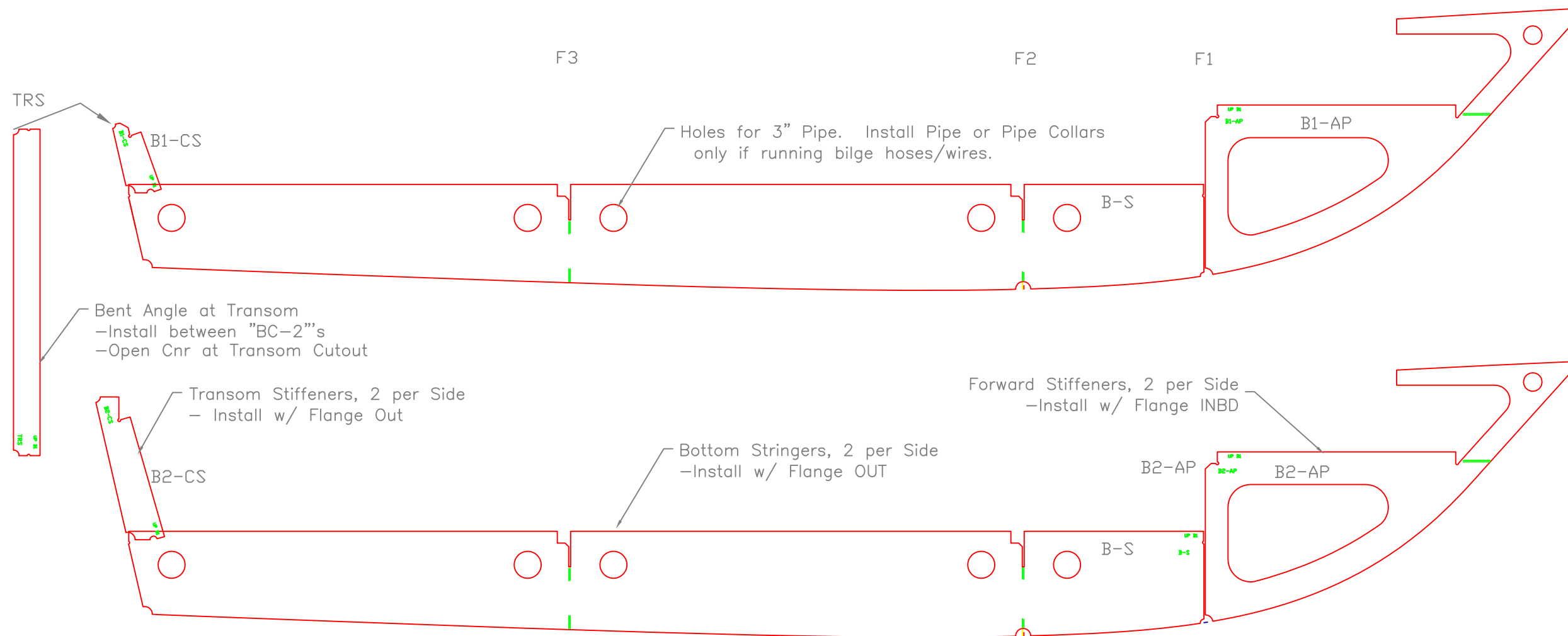


FRAME BENDING: $\frac{3}{16}$ " 5086 H116 Stock

- 1) Confirm results for dimensions and cracking with test strips before bending frames.
- 2) Expected Die Radius is $\frac{1}{2}$ "
- 3) Flanges are designed for Inside web length of $1\frac{1}{2}$ " less than flat stock length as shown.
- 4) Expected Back Gauge setting is 1.55", but confirm and adjust.
- 5) Parts to be flanged per this same set-up:

B1-AP	1
B1-AS	1
B1-CP	1
B1-CS	1
B2-AP	1
B2-AS	1
B2-CP	1
B2-CS	1
B-P	2
B-S	2
F1	1
F2	1
F2-P	1
F2-S	1
F3	1
F3-P	1
F3-S	1
TRS	1

"B1" FLANGE BENDING						
16' FBWB- Self Bailing Vers.						
SCALE Full	DES/DWN WAL	DATE 12/1/14				
<table border="1"> <thead> <tr><th>REV.</th><th>DESCRIPTION</th></tr> </thead> <tbody> <tr><td> </td><td> </td></tr> </tbody> </table>		REV.	DESCRIPTION			SHEET Response Marine, Inc. <small>Newburyport, MA, www.responsemarine.com</small> DWG NO. 495-B-1
REV.	DESCRIPTION					



Bent Angle at Transom
 -Install between "BC-2"s
 -Open Cnr at Transom Cutout

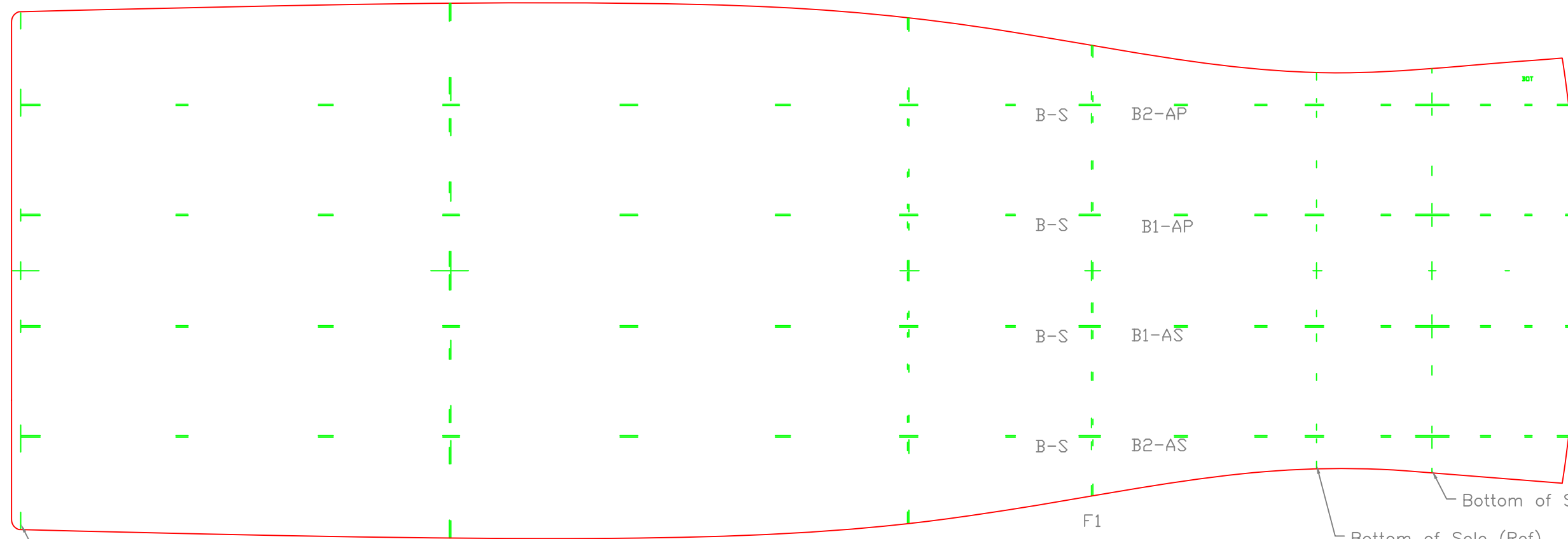
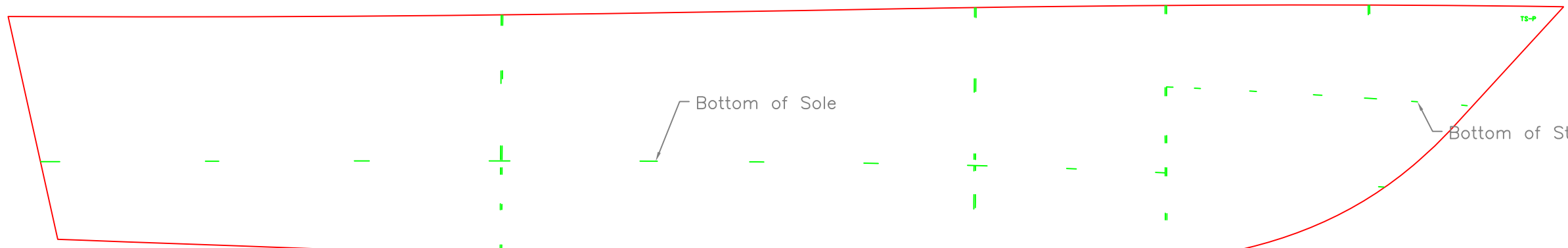
Transom Stiffeners, 2 per Side
 - Install w/ Flange Out

Bottom Stringers, 2 per Side
 -Install w/ Flange OUT

Forward Stiffeners, 2 per Side
 -Install w/ Flange INBD

Holes for 3" Pipe. Install Pipe or Pipe Collars
 only if running bilge hoses/wires.

HULL FRAMING		
16' FBWB- Self Bailing Vers.		
SCALE 3/4" = 1'	DES/DWN WAL	DATE 12/1/14
REV.		DESCRIPTION
		SHEET
Newburyport, MA, www.responsemarine.com		DWG NO. 495-2-1



FWD Edge of Transom

F3

F2

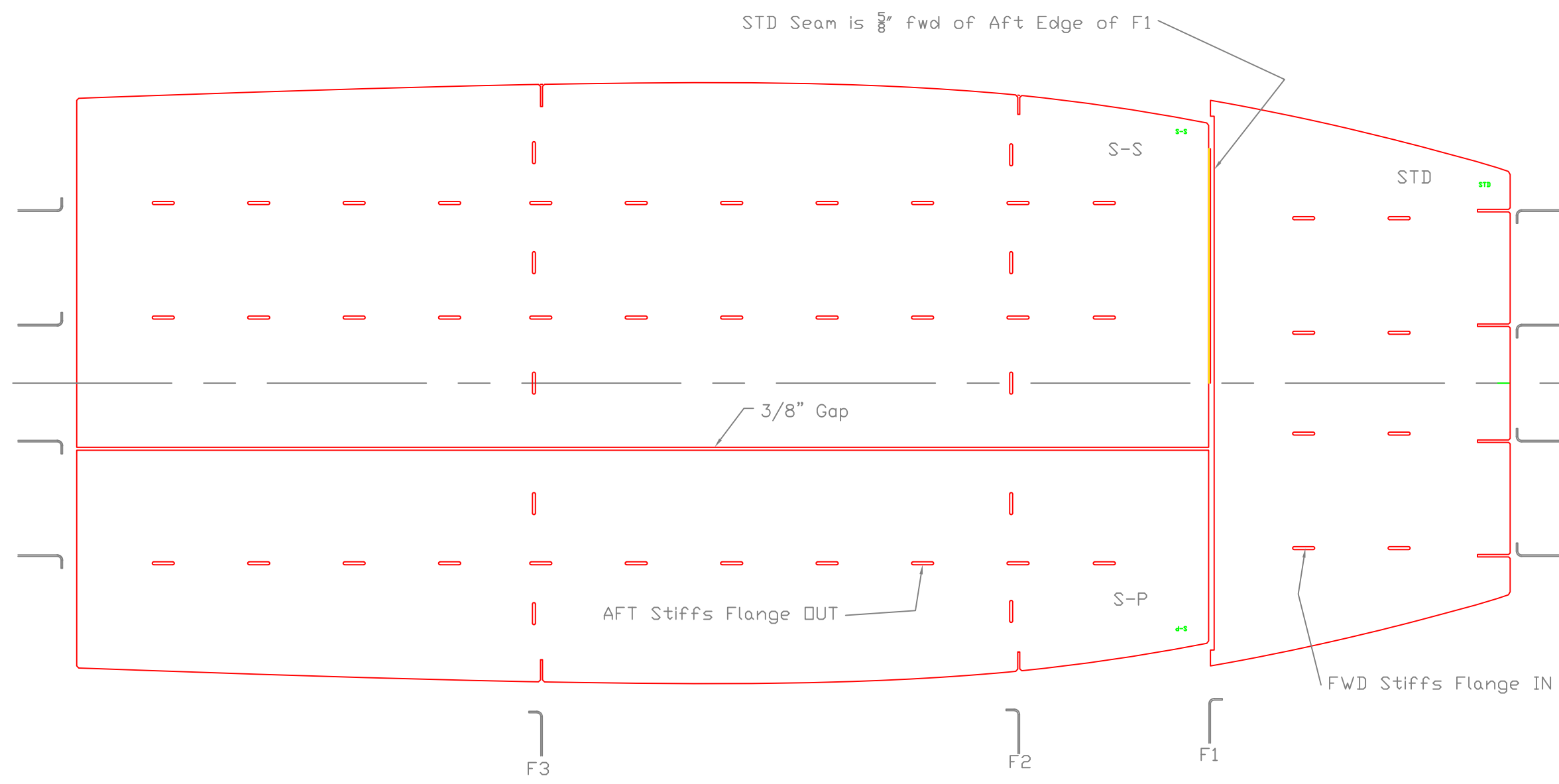
F1

TS-P

BOT

HULL SKINS		
16' FBWB- Self Bailing Vers.		
SCALE 3/4" = 1'	DES/DWN WAL	DATE 12/1/14
Response Marine, Inc.		SHEET
Newburyport, MA, www.responsemarine.com		DWG NO. 495-2-2

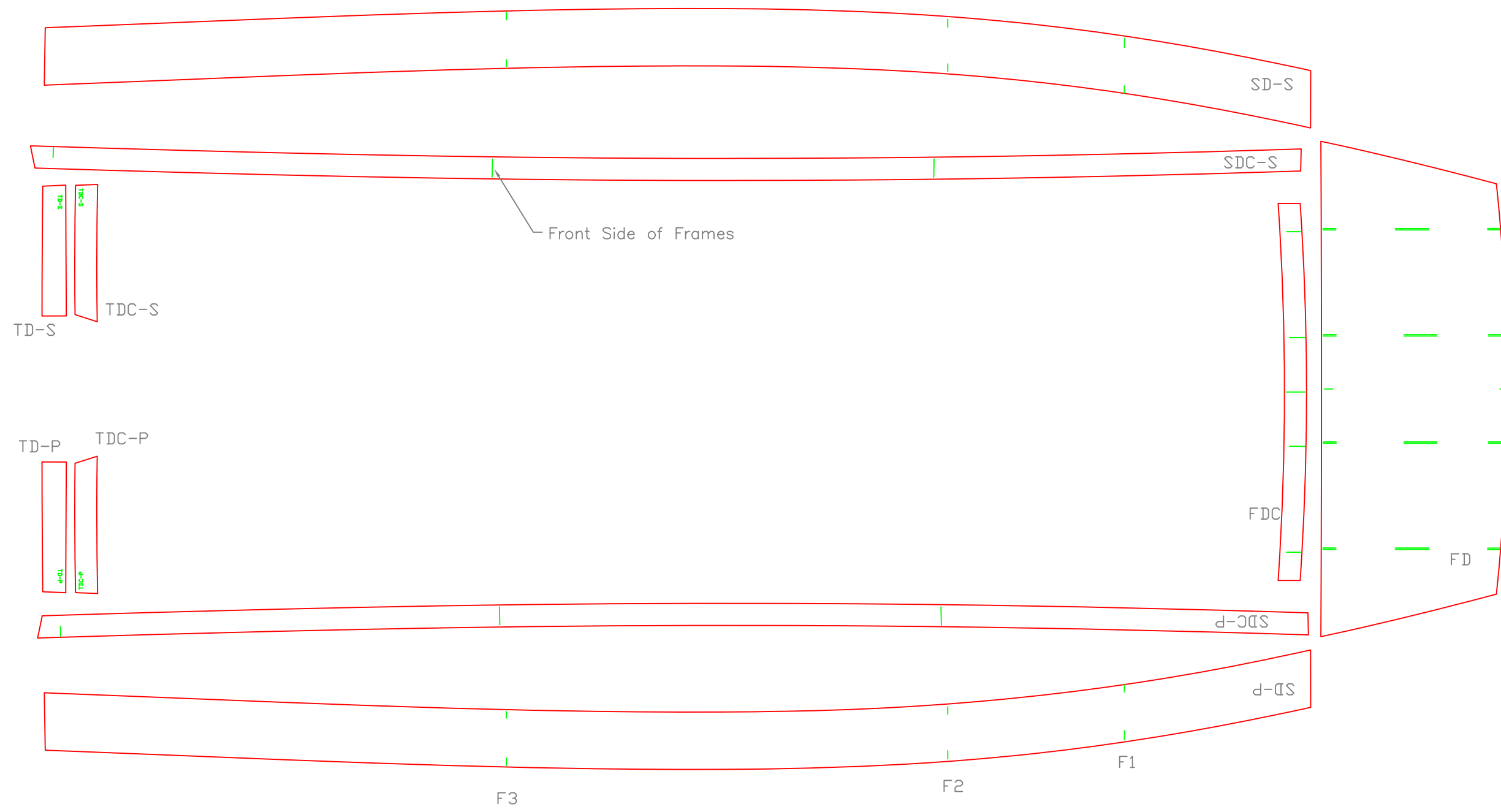
REV.	DESCRIPTION



Decks Viewed from BELOW

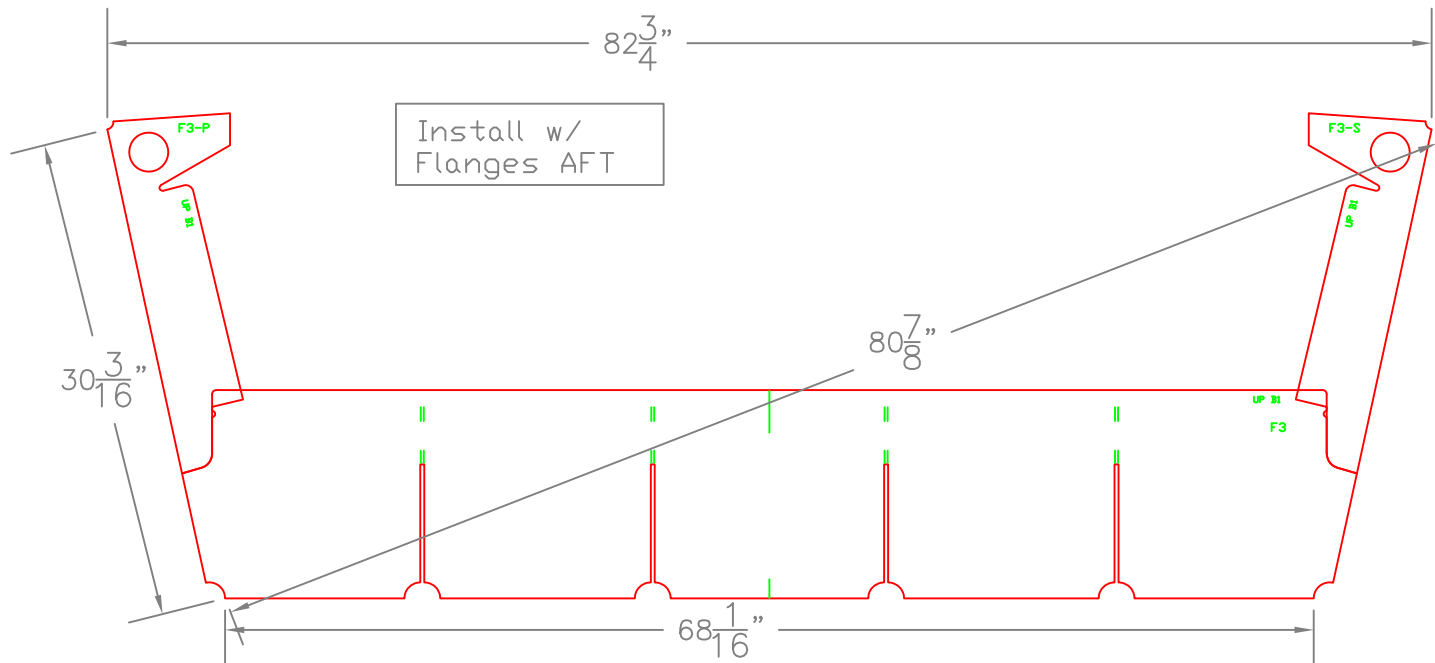
SOLE & STEP DECK		
16' FBWB- Self Bailing Vers.		
SCALE 3/4" = 1'	DES/DWN WAL	DATE 12/1/14
Response Marine, Inc. Newburyport, MA, www.responsemarine.com		SHEET DWG NO. 495-2-3

REV.	DESCRIPTION



SIDE & FORE DECKS		
16' FBWB- Self Bailing Vers.		
SCALE 3/4" = 1'	DES/DWN WAL	DATE 12/1/14
Response Marine, Inc. Newburyport, MA, www.responsemarine.com		SHEET DWG NO. 495-2-4

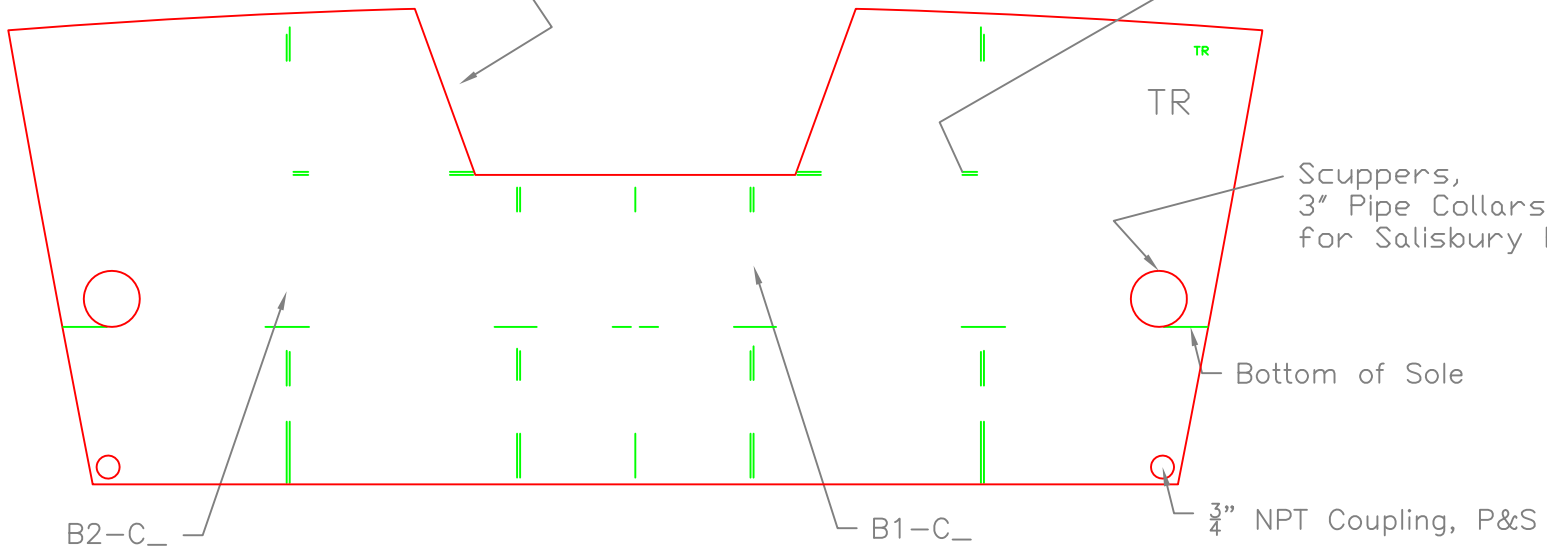
REV.	DESCRIPTION



FRAME 3		
16' FBWB- Self Bailing Vers.		
SCALE 1" = 1'	DES/DWN WAL	DATE 2/8/08
Response Marine, Inc. Newburyport, MA, www.responsemarine.com		SHEET DWG NO. 495-F-3

REV.	DESCRIPTION

Cap Deck End & Side w/ Plate
-Hand Cut



Scuppers,
3" Pipe Collars
for Salisbury Flaps

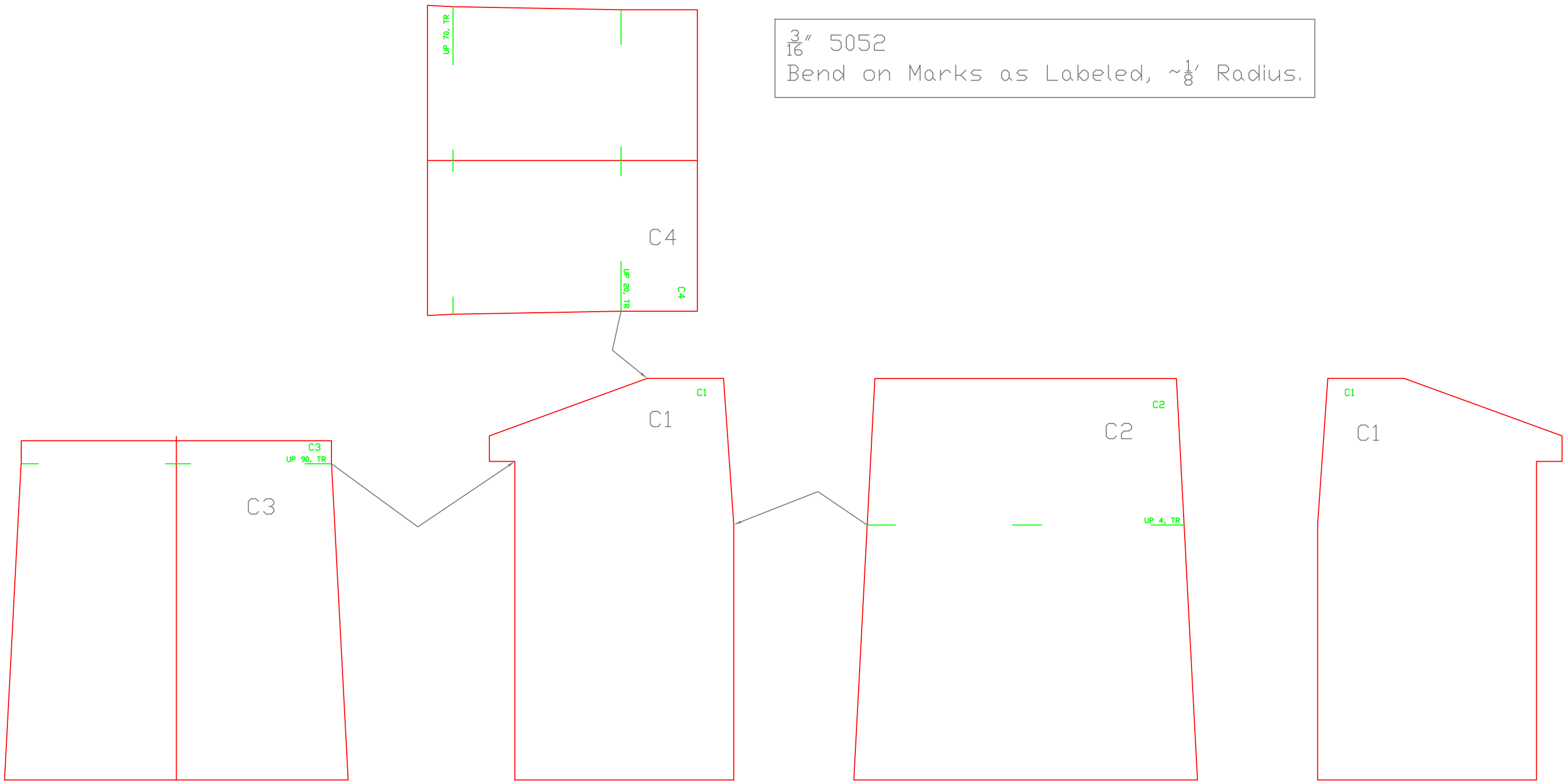
Bottom of Sole

3/4" NPT Coupling, P&S

TRANSOM		
16' FBWB- Self Bailing Vers.		
SCALE 1" = 1'	DES/DWN WAL	DATE 12/1/14
Response Marine, Inc. Newburyport, MA, www.responsemarine.com		SHEET
		DWG NO. 495-F-T

REV.	DESCRIPTION

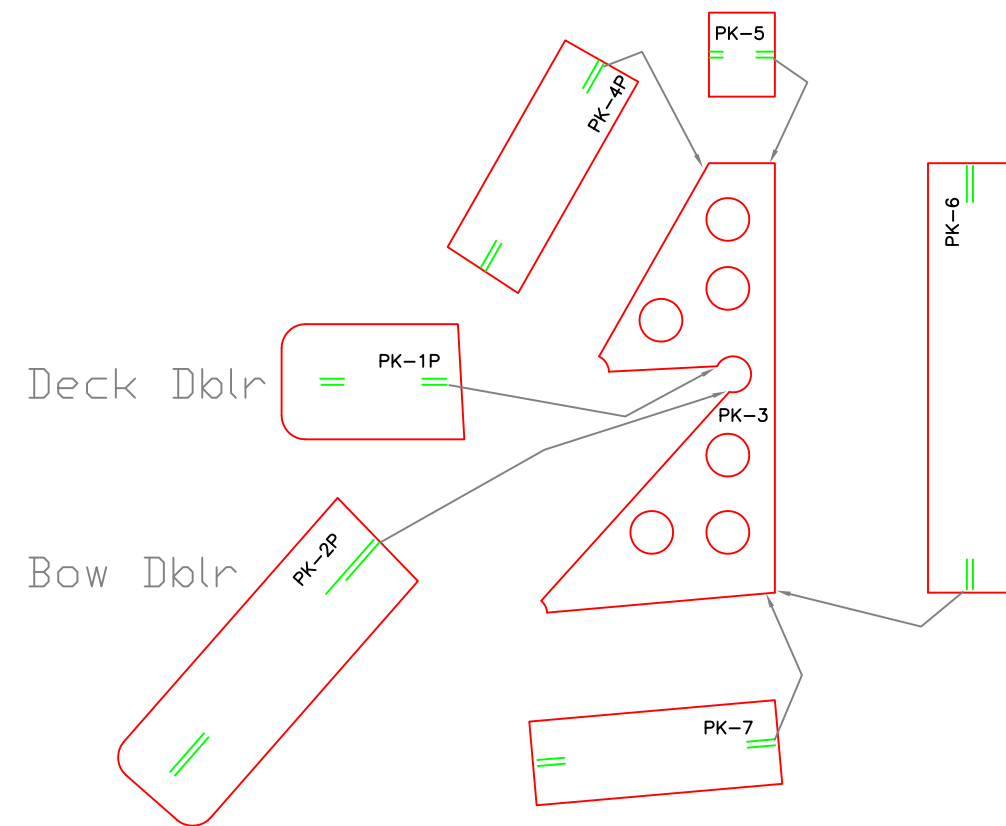
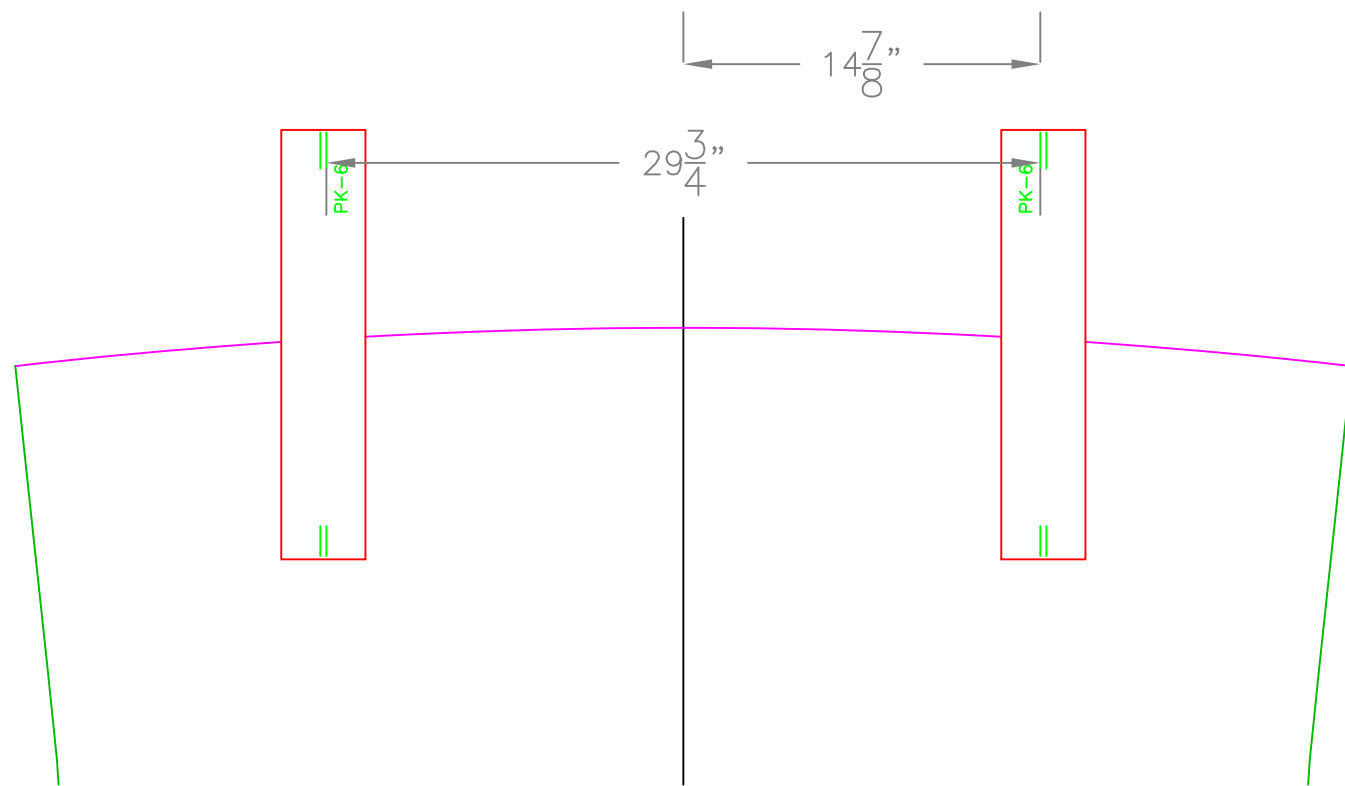
$\frac{3}{16}$ " 5052
 Bend on Marks as Labeled, $\sim\frac{1}{8}$ ' Radius.



Console		
16' FBWB- Self Bailing Vers.		
SCALE 1 1/2" = 1'	DES/DWN WAL	DATE 12/1/14
Response Marine, Inc. Newburyport, MA, www.responsemarine.com		SHEET DWG NO. 495-4-1

REV.	DESCRIPTION

Bow View
(Widths to Inside of Web)



PUSH KNEES		
16' FBWB- Self Bailing Vers.		
SCALE 1 1/2" = 1'	DES/DWN WAL	DATE 12/1/14
Response Marine, Inc.		SHEET
Newburyport, MA, www.responsemarine.com		DWG NO. 495-4-2

REV.	DESCRIPTION