

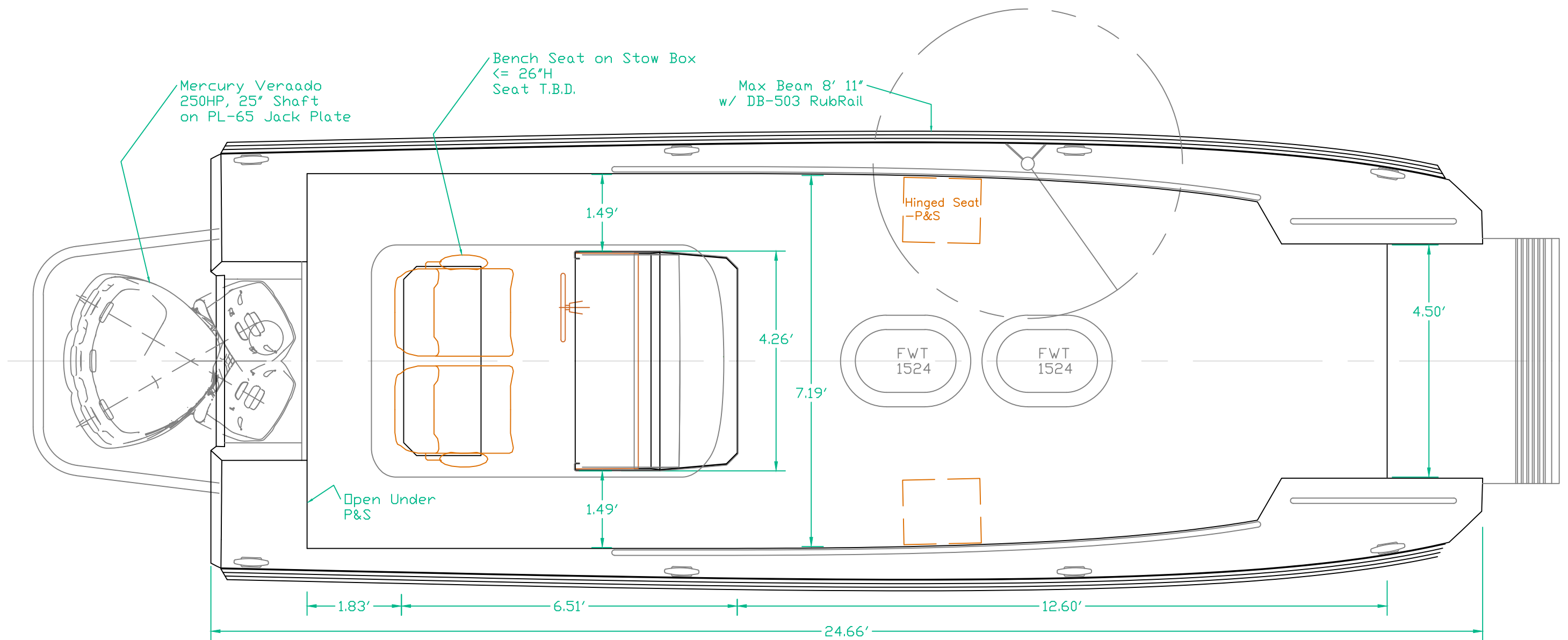
Waterlines (est. thru 11/3/23):

- WL-B: 5,438# @ X=12.2'  
30 gal fuel, 370# crew, 110# misc stow,
- WL-D: 6,178# @ X=11.9'  
"B" plus 740# crew
- WL-BF: 7,438# @ X=11.3'  
"B" plus 2,000# load on workdeck at X=9')
- WL-DE: 7,178# @ X=11.3'  
"D" plus 1,000# ATV at X=8'

OUTBOARD PROFILE		
24.7'x8.9' VLC for LM/W.M.E.D.		
SCALE 1/2" = 1'	DES/DWN WAL	DATE 11/10/23
<b>Response Marine, Inc.</b>		Rev
Newburyport, MA, <a href="http://www.responsemarine.com">www.responsemarine.com</a>		DWG NO. 644-1

This drawing and referenced information represent the intellectual property of Response Marine, Inc. Use, reproduction, or transmittal of drawings and referenced NC part files requires pre-payment of licensing fee to Response Marine, Inc. Construction of each boat and component fabrication are licensed on a per boat basis, and require proof of payment for each unit built, prior to construction. Possession of this drawing and referenced information does not constitute the right to use. Proper boat construction and outfitting requires knowledge and expertise beyond the scope of this, and other, drawings, and this knowledge and expertise is the sole responsibility of the builder.

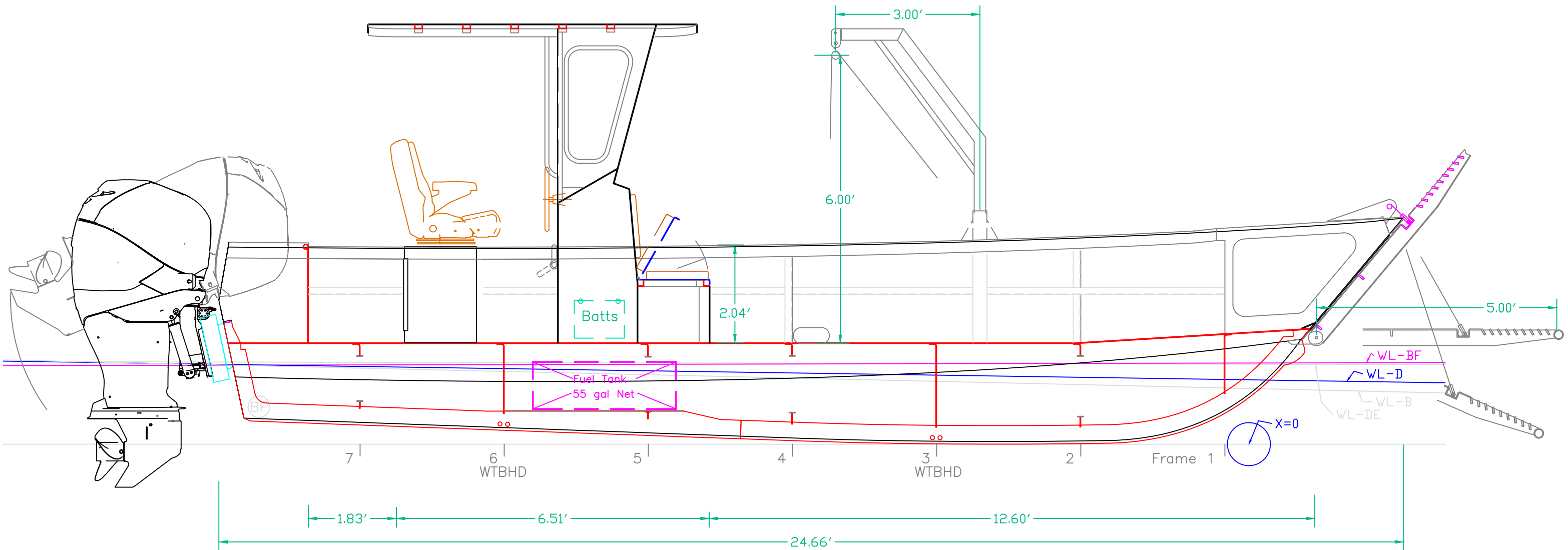
REV.	DESCRIPTION



This drawing and referenced information represent the intellectual property of Response Marine, Inc. Use, reproduction, or transmittal of drawings and referenced NC part files requires pre-payment of licensing fee to Response Marine, Inc. Construction of each boat and component fabrication are licensed on a per boat basis, and require proof of payment for each unit built, prior to construction. Possession of this drawing and referenced information does not constitute the right to use. Proper boat construction and outfitting requires knowledge and expertise beyond the scope of this, and other, drawings, and this knowledge and expertise is the sole responsibility of the builder.

REV.	DESCRIPTION

<b>ARRANGEMENT PLAN</b>		
24.7'x8.9' VLC for LM/W.M.E.D.		
SCALE 1/2" = 1'	DES/DWN WAL	DATE 11/10/23
<b>Response Marine, Inc.</b>		SHEET
Newburyport, MA, <a href="http://www.responsemarine.com">www.responsemarine.com</a>		DWG NO. 644-2



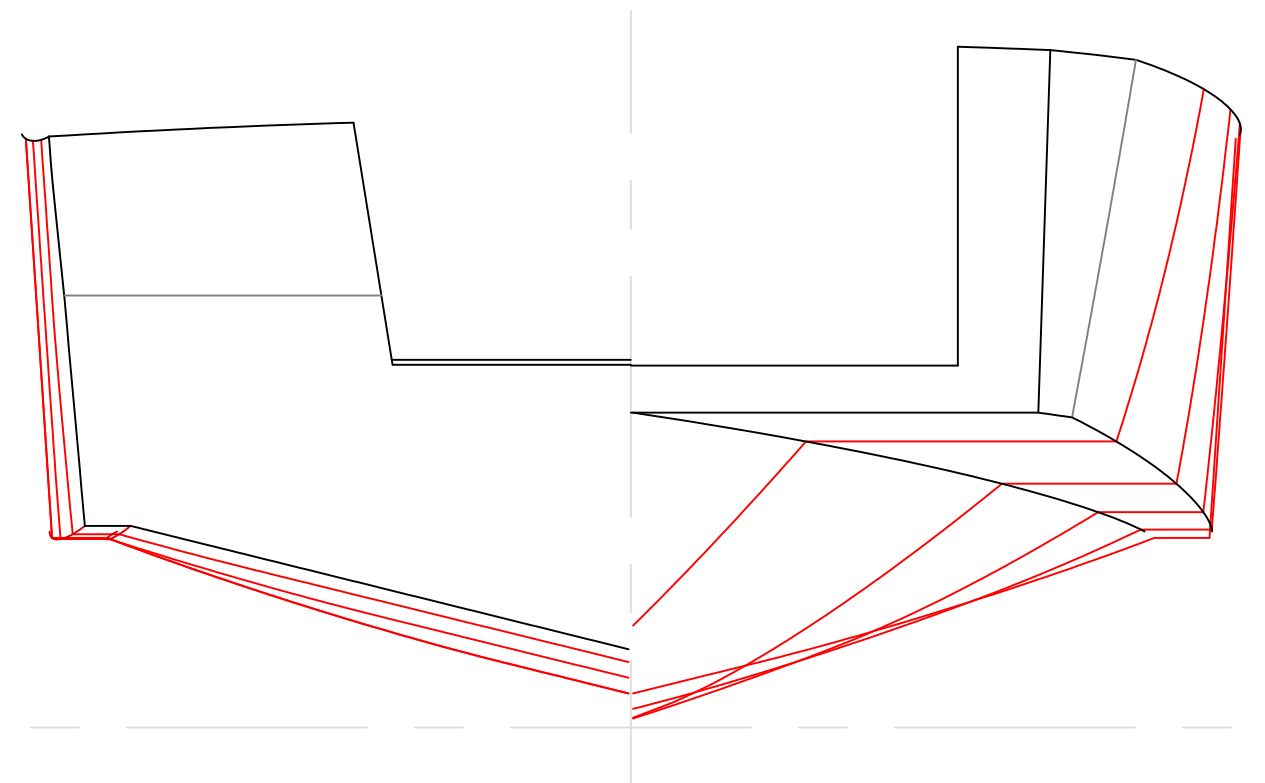
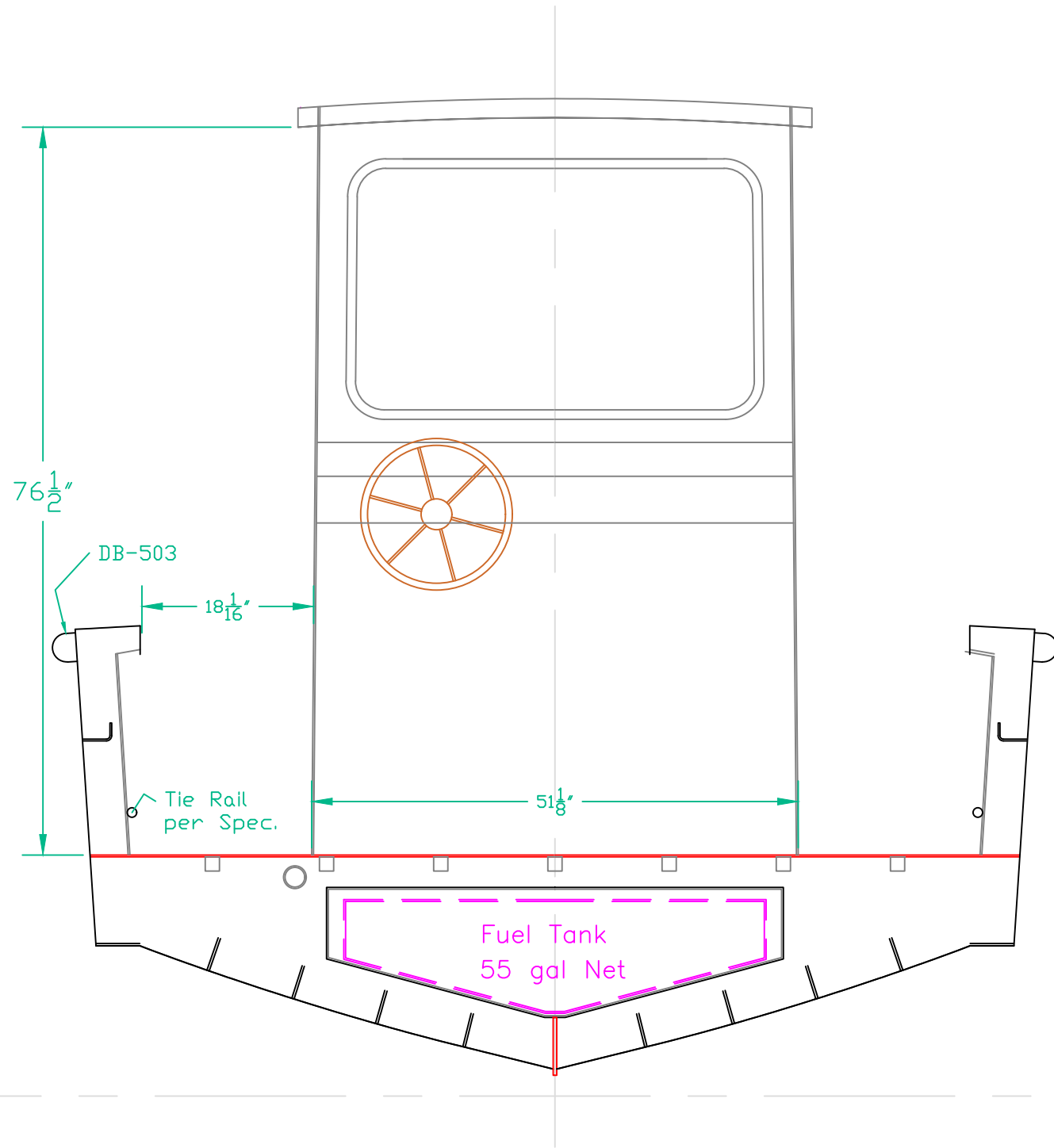
Waterlines (est. thru 11/3/23):

- WL-B: 5,438# @ X=12.2'  
30 gal fuel, 370# crew, 110# misc stow,
- WL-D: 6,178# @ X=11.9'  
"B" plus 740# crew
- WL-BF: 7,438# @ X=11.3'  
"B" plus 2,000# load on workdeck at X=9')
- WL-DE: 7,178# @ X=11.3'  
"D" plus 1,000# ATV at X=8'

This drawing and referenced information represent the intellectual property of Response Marine, Inc. Use, reproduction, or transmittal of drawings and referenced NC part files requires pre-payment of licensing fee to Response Marine, Inc. Construction of each boat and component fabrication are licensed on a per boat basis, and require proof of payment for each unit built, prior to construction. Possession of this drawing and referenced information does not constitute the right to use. Proper boat construction and outfitting requires knowledge and expertise beyond the scope of this, and other, drawings, and this knowledge and expertise is the sole responsibility of the builder.

REV.	DESCRIPTION

<b>INBOARD PROFILE</b>		
24.7'x8.9' VLC for LM/W.M.E.D.		
SCALE 1/2" = 1'	DES/DWN WAL	DATE 11/10/23
<b>Response Marine, Inc.</b>		Rev
Newburyport, MA, <a href="http://www.responsemarine.com">www.responsemarine.com</a>		DWG NO. 644-3



This drawing and referenced information represent the intellectual property of Response Marine, Inc. Use, reproduction, or transmittal of drawings and referenced NC part files requires pre-payment of licensing fee to Response Marine, Inc. Construction of each boat and component fabrication are licensed on a per boat basis, and require proof of payment for each unit built, prior to construction. Possession of this drawing and referenced information does not constitute the right to use. Proper boat construction and outfitting requires knowledge and expertise beyond the scope of this, and other, drawings, and this knowledge and expertise is the sole responsibility of the builder.

Typ. Section & Body Plan		
24.7'x8.9' VLC for LM/W.M.E.D.		
SCALE 3/4" = 1'	DES/DWN WAL	DATE 11/10/23
<b>Response Marine, Inc.</b>		Rev
Newburyport, MA, <a href="http://www.responsemarine.com">www.responsemarine.com</a>		DWG NO. 644-4

REV.	DESCRIPTION